



## Knitwear

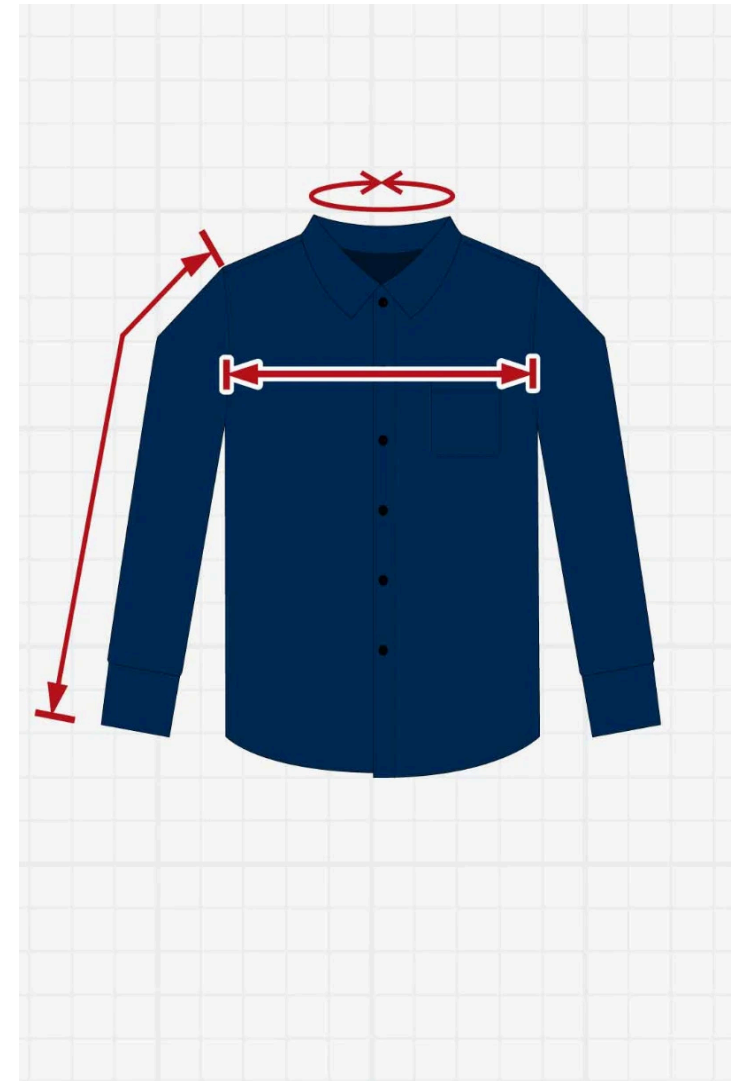
### Find your chest size

Measure around the fullest part of your chest, just under your arms.

### Sleeve length

With elbow bent, measure from the center of the back of your neck around your elbow and to your wrist.

SIZE	S		M		L		XL		2XL		3XL		4XL		5XL	
CHEST	34	36	38	40	42	44	46	48	50	52	54	56	58	60	62	64
SLEEVE REGULAR	33 ½		34 ½		35 ½		36 ½		37 ½		38 ½		39 ½		40 ½	
SLEEVE TALL	34 ½		35 ½		36 ½		37 ½		38 ½		39 ½		40 ½		41 ½	



## Differences between Regular & Tall Sizing

- Tall sizes are 2" longer than Regular sizes in body length.
- Tall sizes are 1" longer than Regular sizes in sleeve length.
- If your size is not available in Regular, we suggest going down a size in TALL as a complimentary size. Equally if your size is not available in TALL, we would suggest going up a size in Regular. The extra length in Tall can in some cases accommodate a Regular size up, and the extra fabric in a Regular size up, can sometimes accommodate a taller silhouette.